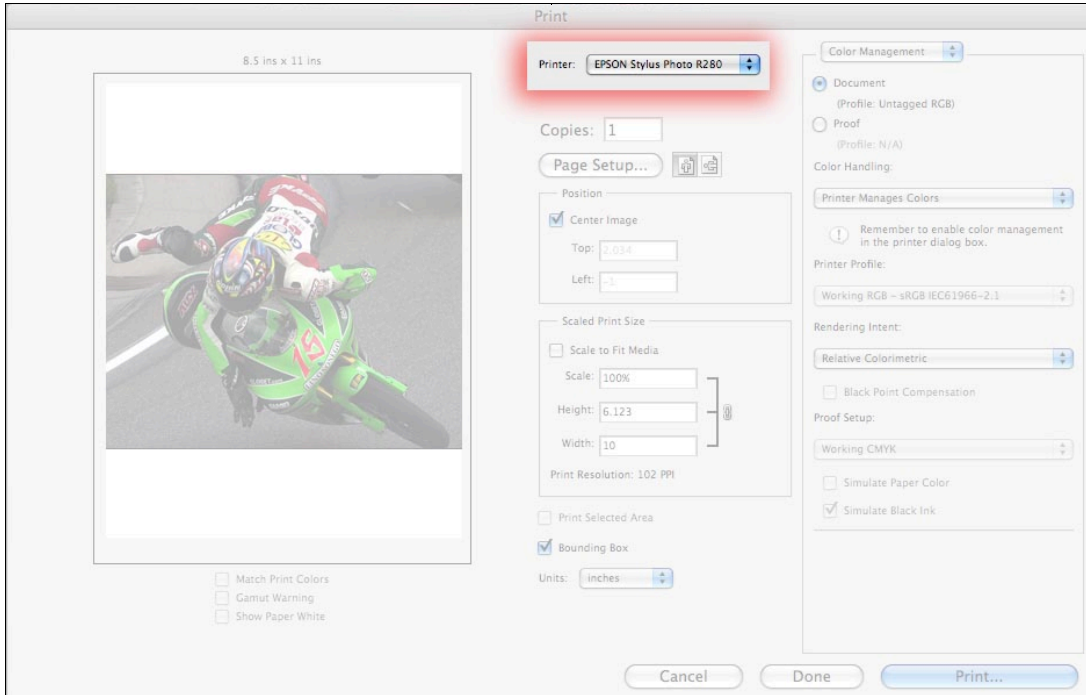


# Printing with Epson

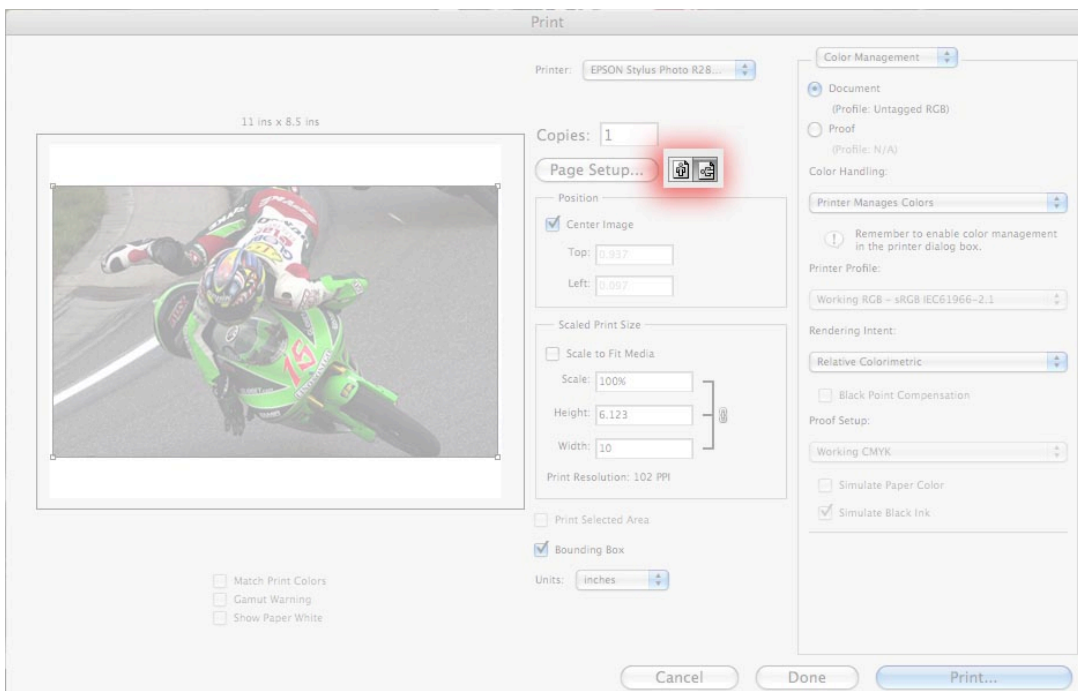
Before printing, size image for print media and save

## A. File ⇒ Print

1. Under “Printer” choose the appropriate Printer



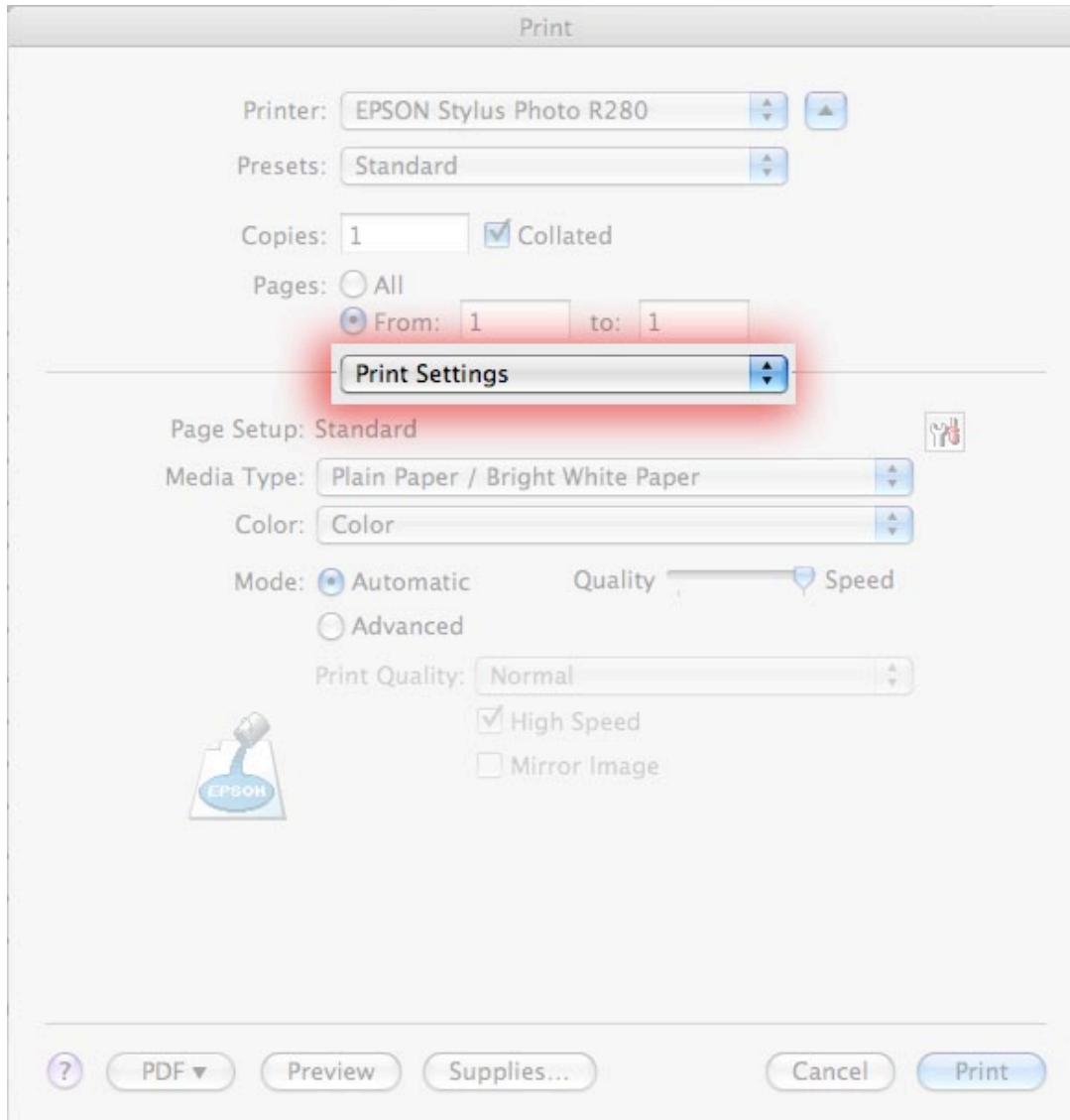
2. Select proper orientation using Orientation Icons and then click “Print Settings...”



## Printing with Epson

### B. Change the print window options to the following

1. Change Layout to Print Settings



2. Change Media Type: to match paper type
3. Change Mode: to "Advanced"
4. Change Print Quality to "Photo RPM"
5. Uncheck "High Speed"
6. Click "Save"
7. Insert paper into printer, glossy/luster side up and click "Print"